

axis diplomat 2016 Modules

Custom Stock Data

Extend the data that you hold for products to include all of the additional specifications and attributes that you wish. This data is ideal for publishing to a website as well as providing your own staff with easy access to more detailed product data.

Applications

The Custom Stock Data module is ideal for anyone selling a range of products that need an extensive list of specifications and attributes, especially where the nature of those specifications varies between different items.

For example, a company selling IT products might have quite different requirements for the data to hold against an external hard drive and an inkjet printer:

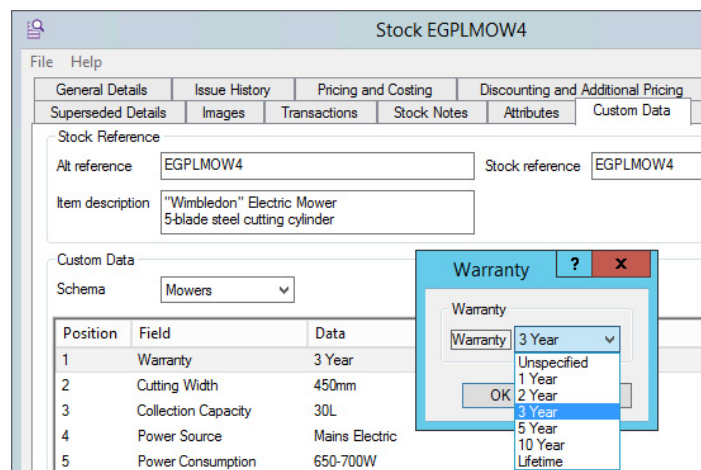
External Hard Drive

Storage Capacity	3TB
Interface	USB3
Data Transfer Rate	5.0 GBps
Warranty	2 Years

Inkjet Printer

Number of Cartridges	4
Print Speed	18ppm
Duplexing	Yes
Interface(s)	USB 2.0, LAN, Wi-Fi

This could apply equally from those handling products from audio visual equipment to power tools, or even clothing, where the custom data might include information such as care instructions, for example "Dry Clean Only?".



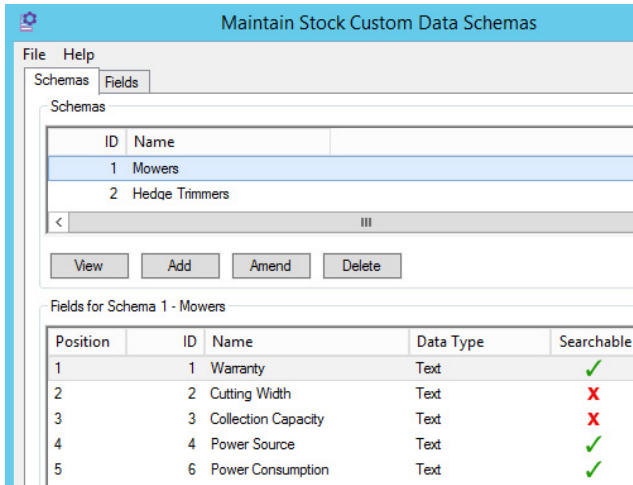
Types of Data

Each field that is defined can have a set of preset options (where the user then chooses from a list) or be a free-typed field. The types of data supported include text, numbers, dates and notes.

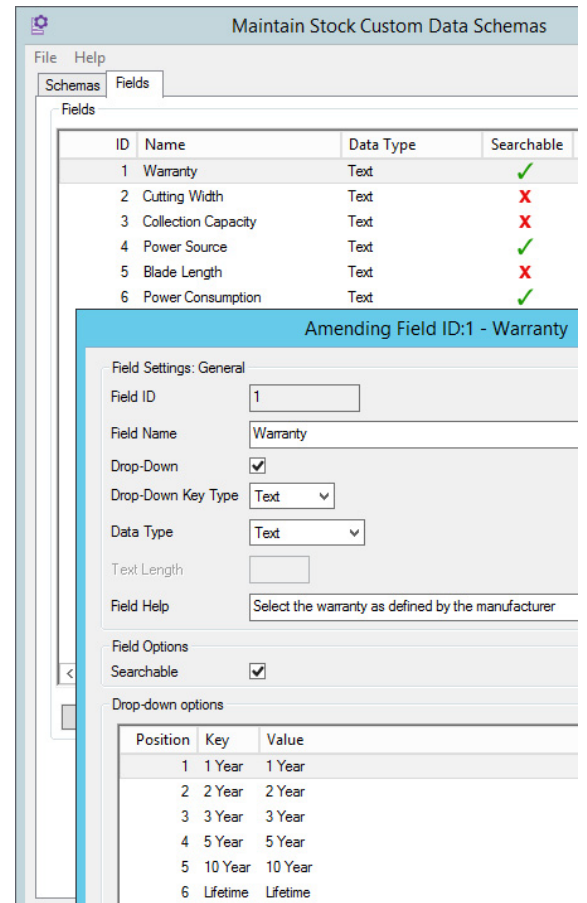
Any number of fields can be created and grouped in many combinations, for different types of product.

Management of Custom Data

A single function allows maintenance of the list of fields to be used across the Stock Ledger and to allow those fields to be combined into a number of "schemas". Each stock item is then assigned to a particular schema, which determines the fields that are applicable to that stock item.



Individual fields may be marked as Searchable; this means that the settings for those fields, for each applicable stock record, are automatically added to the index used for Keyword Searches. In the example shown, a search of the stock ledger for "lifetime" would include any item with a lifetime warranty.



Each field can be used in multiple schemas - for example, the Hedge Trimmers schema might contain the same Warranty, Power Source and Power Consumption fields as the Mowers schema but also include an additional field for "Blade Length".

Custom Stock Data on axis vMerchant

The custom data held on your Stock Ledger can be published to your [axis vMerchant](#) website; the information can be shown as a table on product pages (to supplement or replace standard stock notes). Those fields marked as Searchable may also be used to filter product lists.

Support for Multiple Languages

For users of the Multi-Lingual Stock module, Custom Stock Data allows the recording of data in each language.

Here, for example, a field for "Colour" has been created as a drop-down list, and for the colour option "Red", each language's equivalent is defined.

Drop-down options			
Position	Language	Key	Value
1	English	1	Red
1	French	1	Rouge
1	Polish	1	Czerwony
1	Italian	1	Rosso
1	German	1	Rot

axisfirst
Business Software

Please call us on **0800 668 1934** for further details

01278 421020

sales@axisfirst.co.uk

www.axisfirst.co.uk