

axis diplomat 2016 Modules

Hand Held Stock Control

Provide your warehouse with handheld data entry devices that allow real-time updating of your stock ledger coupled with the ease and accuracy of bar code operation.

Real-Time Operation

The device is connected, via a wireless network, to your server and, as stock adjustments are made (for example, during a stock take), those adjustments are updated automatically in **axis diplomat**.

The Hand Held Stock Control module provides simplified functions for key stock control functions, although any standard **axis diplomat** function, however, can be operated from the hand held units.

The key functions are designed specifically for use with these hand-held devices and are intended for use with bar codes but, as with other functions within **axis diplomat**, items can be selected by reference or by key word selection using the built-in keypad or touch screen.

Since the software is closely dependent upon the characteristics of the hand held data capture device, Axis First offers a bundle pack consisting of the **axis diplomat** Mobile Client Licence, together with the ruggedised data capture device itself, to provide everything (except the wireless network infrastructure) you need to be able to use the Hand Held Stock Control functions.

The Hand-held Device Features

These hand-held devices offer the following features:

- Rugged Construction
- Wireless Connection providing real-time access to your **axis diplomat** system
- Easy Recharging via Docking Station
- Built in Laser Class Bar Code scanner with left- or right-handed operation
- 15 key alphanumeric keypad or touch-screen keyboard

Options available:

- Extended battery pack.
- Vehicle mounting.



Hand Held Stock Control Unit with integral bar code scanner

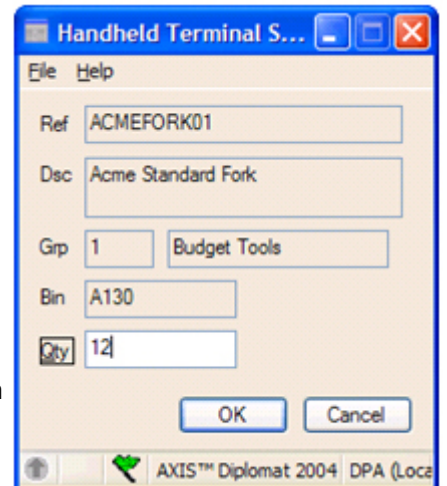
Frequently Asked Questions

What specifically-designed functions are available for use on the hand-held units?

The list of **axis diplomat** functions that are designed specifically for these units includes:

- Stock Take Adjustment
- Positive Stock Adjustment
- Negative Stock Adjustment
- Stock Enquiry

These functions offer much greater simplicity than their fully-featured, full screen equivalents and are designed specifically with the needs of the warehouse in mind.



Additional **axis diplomat** modules also enable the following:

- Sales Order picking
- Works Order picking
- Enhanced Stock take

What Infrastructure do I need to be able to use these Devices?

Connection to your network is using standard wireless networking technology (802.11b or 802.11g). Your warehouse needs Wi-Fi base stations, known as access points, to which the devices connect. The number of access points that you require will depend on the size and layout of your warehouse.

The devices connect to your server using a protocol known as RDP (Remote Desktop Protocol), which means that your server must be capable of providing Terminal Services.



Hand Held Stock Control Device on its docking station/recharger

axisfirst
Business Software

Please call us on **0800 668 1934** for further details



01278 421020



sales@axisfirst.co.uk



www.axisfirst.co.uk