

XEROX®

Technology | Document Management | Consulting Services

copy | print | scan | email

# Your ultimate office performer



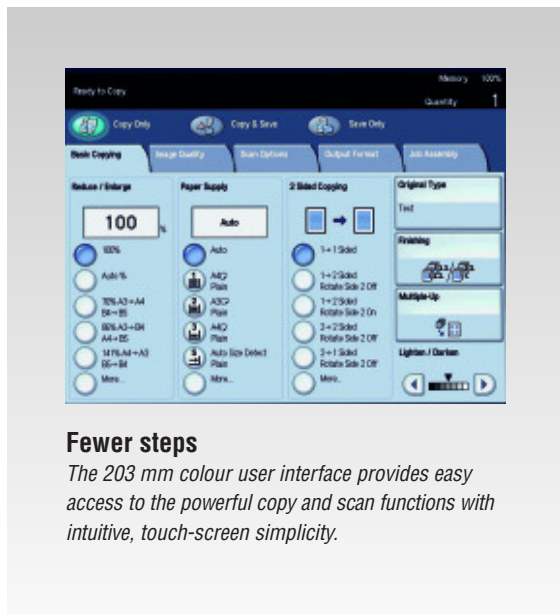
# Xerox 4595

## copier/printer

### Top performance

Engineered for ultra-fast copying, printing and scanning, the Xerox 4595 copier/printer will quickly exceed your demanding expectations.

- With a print speed of up to 95 ppm and a first-page-out time as fast as 3 seconds, the Xerox 4595 copier/printer accelerates your workgroup's productivity.
- At 2400 x 2400 dpi, you get great-looking copies and prints with crisp text and image integrity with distinctive detail.
- A huge 40 GB hard drive delivers ample built-in storage for quick reprinting directly from the device and 512 MB of onboard RAM lets you process a heavy workload.
- Perform multiple jobs simultaneously for increased productivity. Perfect for large workgroups, busy users can copy, print and scan separate jobs at the same time.



### Fewer steps

*The 203 mm colour user interface provides easy access to the powerful copy and scan functions with intuitive, touch-screen simplicity.*

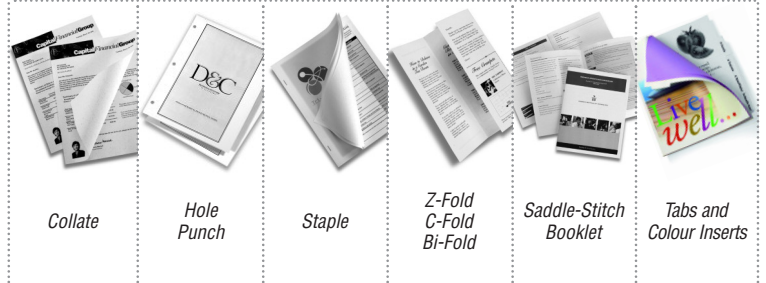


## More versatility

With the flexibility to accommodate a broad range of documents and finishing options, the Xerox 4595 copier/printer is well-equipped to take your business documents to new heights.

- Robust in-line finishing options include collating, 100-sheet stapling, hole punching, booklet making, bi-folding, C-folding, Z-folding and unique oversize Z-folding of A3 inserts.
- Create documents that get the results you're after by adding eye-catching, full-colour covers and inserts to black and white print jobs with the unique post-process inserter.
- The Xerox 4595 copier/printer helps you make the most of your business documents with flexible support for a variety of media weights and sizes – including custom sizes up to 330 x 488 mm and the ability to easily print onto tabs and insert them into a document.
- Up to eight paper trays give you a variety of media options, allowing easy copying and printing of complex jobs that won't require manual collation.
- High-volume scan jobs are faster and easier with the 250-sheet document handler.
- Emulsion Aggregate toner provides benchmark image quality at high speeds and high volumes.

Multiple finishing options let you choose the capabilities that are right for individual workgroups



Large input capacity of up to 8 trays with an 8,225-sheet capacity

1	2	3 4	5	6 7	8
1,100-sheet A4-size tray	1,600-sheet A4-size tray	Two 550-sheet trays, custom sizes to 330 x 488 mm	250-sheet bypass tray	High-capacity feeder (optional) with two 2,000-sheet A4-size trays	175-sheet post-process inserter

Not shown: 2,000-sheet Oversize High-Capacity Feeder (optional), custom sizes to SRA3.



The unique post-process inserter lets you add pre-printed colour covers, tabs and other inserts to black and white copy and print jobs.

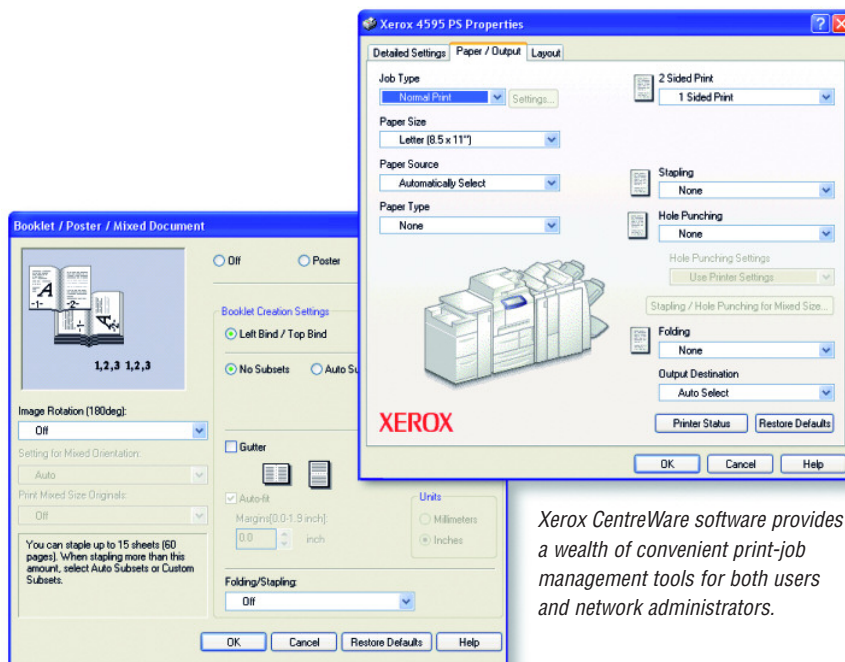


The large, ultra-simple user interface allows total control of copying and scanning functions – a key feature for busy walk-up environments.

## Easy productivity

Time-saving features and simple, user-friendly controls make the Xerox 4595 copier/printer the ideal business-document solution for any fast-paced, multi-user environment.

- Copy and scan with walk-up ease using the easy-to-navigate 203 mm colour touch-screen interface.
- With a workflow built around the Xerox CentreWare® look and feel, users will quickly embrace the intuitive print drivers and web interface, drastically lowering their learning curve while delivering out-of-the-box productivity.
- The built-in copy/print server saves space by eliminating the need for separate, stand-alone hardware.
- Engineered for maximum uptime and reliability, and backed by unparalleled service, the Xerox 4595 copier/printer makes printing hassle-free and office life easier.



Xerox CentreWare software provides a wealth of convenient print-job management tools for both users and network administrators.

The intuitive print driver makes it easy for users to quickly set up and manage complex print jobs, including folding, booklet printing and post-process inserting.

## Powerful scan capabilities

Take scanning speed and power to a whole new level.

- Spend less time waiting. The scanner scans an ultra-fast 100 images per minute.
- Make your workflow more efficient with Scan-to-Email with LDAP support and Mail Delivery Notification, allowing direct scanning to your MS Outlook or Lotus Notes address book. In addition, you get the added convenience of Scan-to-Network capability (FTP/SMB).
- Automatic Job Flow Scanning makes repetitive tasks simple by allowing you to pre-program frequently used job instructions.
- Get consistent, high-quality digital images and fast results with a scan resolution of up to 600 x 600 dpi.
- Scan once, reprint later functionality streamlines office workflows and saves you valuable time.
- Store your business-critical documents in the onboard, 14.6 GB central archive with 500 Mailboxes/Folders. No need to rescan your time-sensitive print-on-demand documents.
- The optional colour scanning kit lets you scan, save and send full-colour documents for fast and efficient communications with added impact.
- With walk-up copying convenience, the powerful Build Job feature lets you use the front-panel interface to create customised documents by combining multisegmented jobs into a single job, such as mixing single-sided and double-sided sections.

# Serious productivity

**With an unprecedented combination** of superior performance, ease of use and exceptional versatility, the Xerox 4595 copier/printer is perfectly suited for busy offices and light production environments. Robust enough to handle your complex jobs and flexible enough to provide a range of document finishing options, the Xerox 4595 delivers the results you need to stay at the top.



## The Xerox 4595 — your ideal solution for:

### **Education**

Ease of use and a wide range of finishing options make the Xerox 4595 copier/printer the ideal solution for multiuser education environments, where it's critical to keep work in-house and minimise outsourcing costs. Its speed and efficiency make it one of the most productive multifunction systems for this market.

### **Office**

The ability to quickly process a variety of jobs in different formats and with different resource requirements makes the Xerox 4595 copier/printer perfect for any busy office. It can handle more media types and larger quantities – with longer unattended run time – and deliver better quality so that more work can be done in-house. Add to that Scan to Email with LDAP to enable streamlined communication across the office.

### **Centralised Reproduction Departments**

The Xerox 4595 copier/printer is up to the task in fast-paced CRD environments, where jobs are submitted in multiple formats with quick turnaround expectations, and where a single workflow and basic finishing options are critical.

### **Quick Print / Pay-for-Print**

With walk-up ease, helpful tools and the ability to expand to meet future needs, the Xerox 4595 copier/printer is perfectly suited for pay-for-print businesses. It handles a heavy load of complex jobs – often with expanded finishing and colour-integration requirements – for a wide variety of users.

Find out more. For more information, visit us at [www.xerox.com/office](http://www.xerox.com/office)



		Xerox 4595 Copier / Printer
<b>Speed</b>		Up to 95 ppm
<b>Device Memory</b>		512 MB RAM, 40 GB hard drive with 14.6 GB for document storage
<b>Paper Handling</b>		
Paper input	Standard	<b>Tray 1:</b> 1,100 sheets; Size: A4; 52–216 gsm <b>Tray 2:</b> 1,600 sheets; Size: A4; 52–216 gsm <b>Trays 3–4:</b> 550 sheets each; Custom sizes: 140 x 182 to 330 x 488 mm; 52–216 gsm <b>Tray 5 Bypass Tray:</b> 250 sheets; Custom sizes: 102 x 152 to 330 x 488 mm; 52–253 gsm
	Optional	<b>Trays 6–7 High-Capacity Feeder:</b> 2 Trays – 2,000 sheets each; Size: A4; 52–216 gsm <b>Tray 6 Oversize High-Capacity Feeder:</b> 1 Tray – 2,000 sheets; Custom sizes: B5 to SRA3; 52–253 gsm
Document handler		<b>Duplex Automatic Document Feeder:</b> 250 sheets
Finishing (choose 1)		<b>Finisher:</b> 3,000-sheet output, 3-position single or dual 100-sheet stapling, 2- and 4-hole punch <b>Inserter:</b> 175 sheets; Size: A4 to A3; 52 – 220 gsm
		<b>Booklet Maker Finisher:</b> 2,000-sheet output, 3-position single or dual 100-sheet stapling, 2- and 4-hole punch, saddle-stitch booklet making <b>Inserter:</b> 175 sheets; Size: A4 to A3; 52–220 gsm
	Optional	<b>Folder:</b> C-fold and Z-fold of A4, folds A3 Z-folds for inserts
<b>Copy</b>		
First-page-out time		As fast as 3 seconds
Copy resolution		600 x 600 dpi
Copy features		Automatic Two-sided output, Transparency dividers, Booklet creation, Mixed-size originals, Multi-up, Covers insertion, Annotation, Auto fit, Edge erase, Repeat image, Build Job, Tab copying
<b>Print</b>		
System		750 MHz, 40 GB hard drive, 512 MB memory
Connectivity		10/100Base-TX Ethernet
PDL support		PCL® 6, PCL 5e, Adobe® PostScript® 3™, HPGL, HPGL2, Direct print TIFF, PDF
Print resolution		Up to 2400 x 2400 dpi
Print features		Watermarks, N-up, Booklet imposition, Forms/Image overlay, Email notification of print jobs, Sample print, Delayed print
<b>Scan</b>		
Scan destinations		Scan to email with LDAP support, Network file server, Mailbox, Job template
Scan speed		100 ipm simplex, 60 ipm duplex
<b>Security</b>		Secure Print
<b>Accounting</b>		Internal Auditron
<b>Options</b>		Security Kit (includes Image Overwrite and Data Encryption), Foreign Interface Device, Colour Scanning Enablement Kit



© 2007 XEROX CORPORATION. All rights reserved. Xerox® and CentreWare® are trademarks of XEROX CORPORATION in the United States and/or other countries. In support of Xerox's environmental leadership goals, these models may contain some recycled components that are reconditioned. ENERGY STAR® is a U.S. registered mark. As an ENERGY STAR® Partner, Xerox Corporation has determined that these products meet the ENERGY STAR® guidelines for energy efficiency. Product appearance, build status and/or specifications are subject to change without notice. 4/07 X95BR-01EA