

axis diplomat

Hand Held Stock Control

Advances in wireless technology now means that it is possible to provide your warehouse with handheld data entry devices that allow real-time updating of your stock ledger coupled with the ease of use of bar code operation.



Real-time Operation

Real-time operation means that the data entry device is connected, via a wireless network, to your server and, as stock adjustments are made (for example, a stock take adjustment), those adjustments are updated automatically onto your **axis diplomat** system.

The Hand Held Stock Control module provides simplified functions for key stock control functions, although any standard **axis diplomat** function, however, can be operated from the hand held units.

The key functions are designed specifically for use with these hand-held devices and are intended for use with bar codes but, as with other functions within **axis diplomat**, items can be selected by reference or by key word selection using the built-in keypad.

Since the software is closely dependent upon the characteristics of the hand held data capture device, Axis First offers a bundle pack consisting of the **axis diplomat** Mobile Client Licence, together with the ruggedised data capture device itself, to provide everything (except the wireless network infrastructure) you need to be able to use the Hand Held Stock Control functions.

The Hand-held Device Features

These hand-held devices offer the following features:

- ✓ Rugged Construction
- ✓ Wireless Connection providing real-time access to your **axis diplomat** system
- ✓ Easy Recharging via Docking Station
- ✓ Built in Laser Class Bar Code scanner with left- or right-handed operation
- ✓ 15 key alphanumeric keypad or touch-screen keyboard



Hand Held Stock Control Unit with integral bar code scanner

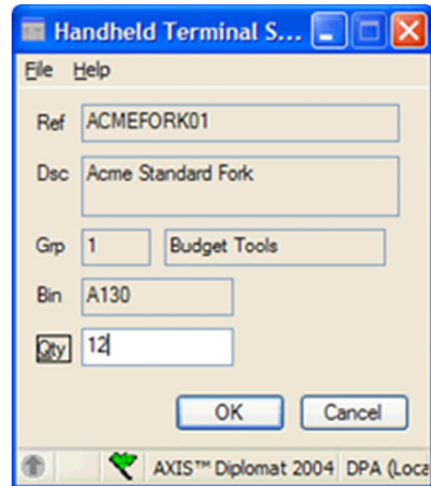
Frequently Asked Questions

What specifically-designed functions are available for use on the hand-held units?

The list of functions that are designed specifically for these units is liable to increase from time to time but includes:

- ✓ Stock Take Adjustment
- ✓ Positive Stock Adjustment
- ✓ Negative Stock Adjustment
- ✓ Stock Enquiry

These functions offer much greater simplicity than their fully-featured, full screen equivalents and are designed specifically with the needs of the warehouse in mind.



What Infrastructure do I need to be able to use these Devices?

Connection to your network is using standard wireless networking technology, known as 802.11b. Your warehouse needs one or more base stations, known as access points, to which the devices connect. The exact number of access points that you require will depend on the size and layout of your warehouse.

The devices connect to your server using a protocol known as RDP (Remote Desktop Protocol), which means that your server must be capable of providing Terminal Services. You will also need **axis diplomat 2004** or above in order to support the Hand Held Stock Control Module.



Hand Held Stock Control Device on its docking station/recharger

Purchasing Information

To order a Hand Held Client Pack, comprising of the **axis diplomat** mobile user licence, the ruggedised device and its docking station, please quote reference AXD91ACLH.

Further Information

For further details please call one of our sale team on **0800 668 1934** or by visiting our website www.axissoftware.co.uk