

## axis diplomat 2016 Modules

# Purchase Delivery Advice

Record your supplier's **Advance Shipment Notifications** within **axis diplomat** and make the information available to staff to aid planning, provide more accurate information to customers and make the receipt of large shipments more efficient, especially when dealing with deliveries which may be a consolidation of a number of your purchase orders.

### Key Features

The Purchase Delivery Advice module was developed with those with overseas suppliers in mind (in particular for shipments where you know many weeks in advance when deliveries are arriving and items from a number of orders will be collected together to fill a shipping container). It can also be equally useful to anyone operating with a relatively long lead-time from their suppliers.

When you receive a Delivery Advice from your supplier, you enter the details of the advice into the system, including the Supplier's delivery reference, the anticipated arrival date (and whether or not that has been confirmed) as well as which items from which purchase orders are on that delivery.

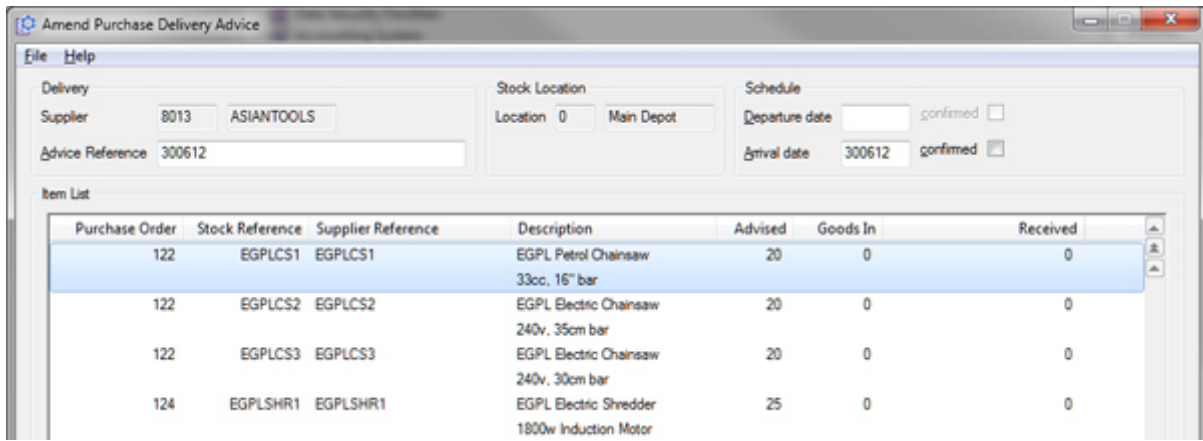
When the delivery is received, you can then use an alternate Goods Received process to receive the goods against that Delivery Advice rather than against the individual purchase orders. In the case of a large shipping container, for example, containing shipments, or part shipments, from many different purchase orders, this significantly simplifies the goods receipt process. For users of the Hand-Held Stock Control module, this process is fully supported by the hand-held devices.

### Benefits

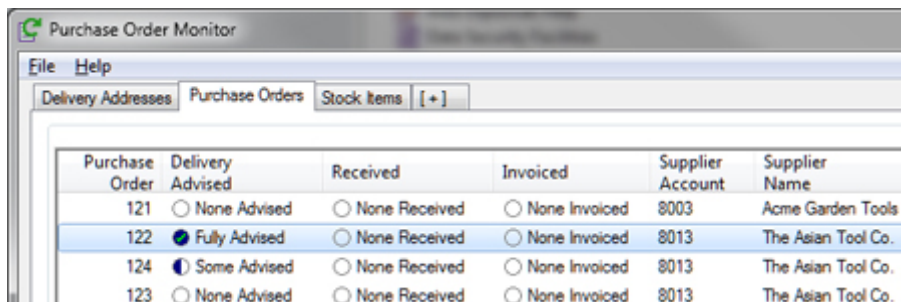
With the Purchase Delivery Advice module, warehouse management, purchasing and sales staff can see a more accurate state of your current purchase orders. This allows better planning for receiving expected deliveries and also being able to provide more accurate guidance to customers as to when stock is expected to become available.

With those dealing with large shipments, in particular those arriving by container, unpacking and checking a delivery can be a time-consuming operation, especially when the delivery consists of parts of many purchase orders. If the information as to what is expected in the delivery is already within the system, it is much easier to cross-check the delivery with that than against a list of all your orders for that supplier.

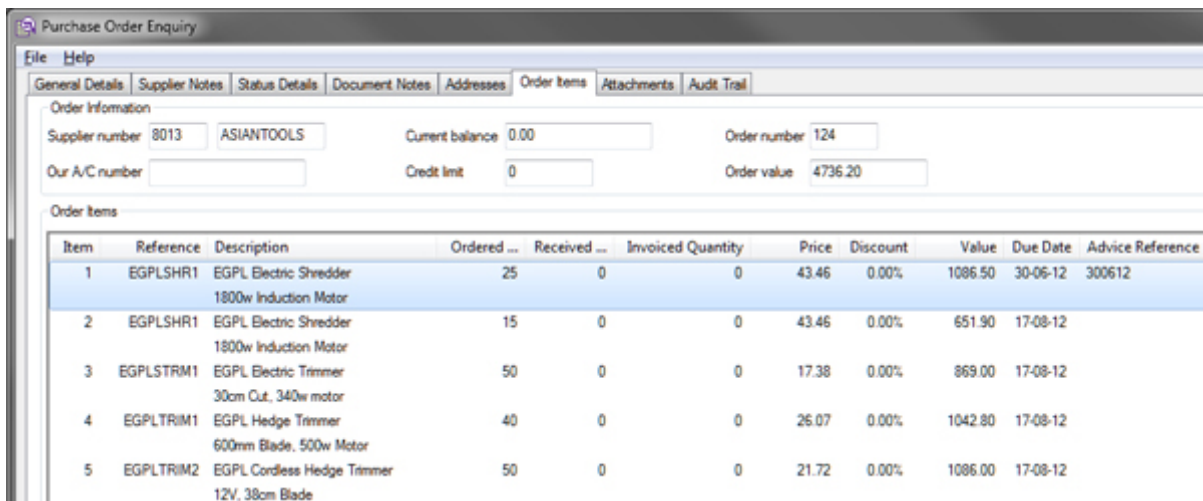




Enter / Amend Delivery Advice - this function allows you to record the expected receipt date, for items possibly collected together from a number of different purchase orders, under a single supplier's delivery reference.



These items then appear as Advised (or Some Advised in the case where only some of the outstanding items on a purchase order have been advised) on the Purchase Order Monitor.



Where a partial delivery of a single purchase order line is being made, the system automatically splits the line so that operators can see how many have and have not be advised of delivery.

**axisfirst** Business Software

Please call us on **0800 668 1934** for further details

01278 421020 | sales@axisfirst.co.uk | www.axisfirst.co.uk